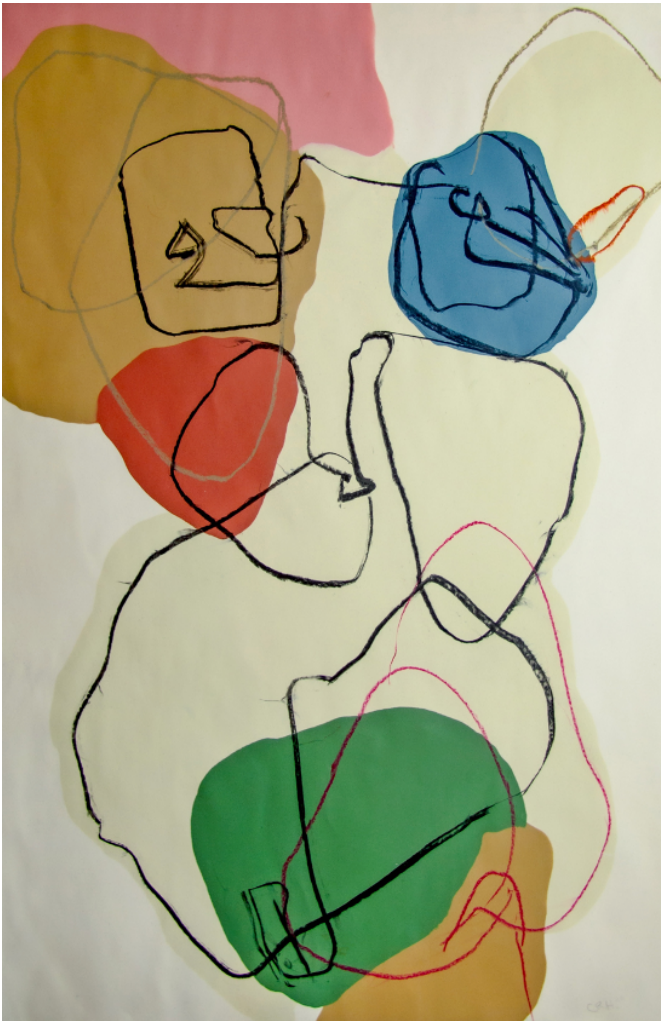


ARTEFACT.BERLIN ANNOUNCES A DEBUT SOLO EXHIBITION BY ARTIST
CATERINA RENAUX HERING | UNVEILING GENUINE SENSATION THROUGH THE
POETIC EXPRESSION OF THE BODY

The exhibition will present a series of drawings and ceramic sculptures, exploring traditional and innovative ways of presenting art, all the while exploring the organic nature of the corporal form.

VIP and Press Preview: November 2, 2023 | 6 – 8 PM

On View: November 3, 2023 – December 20, 2023

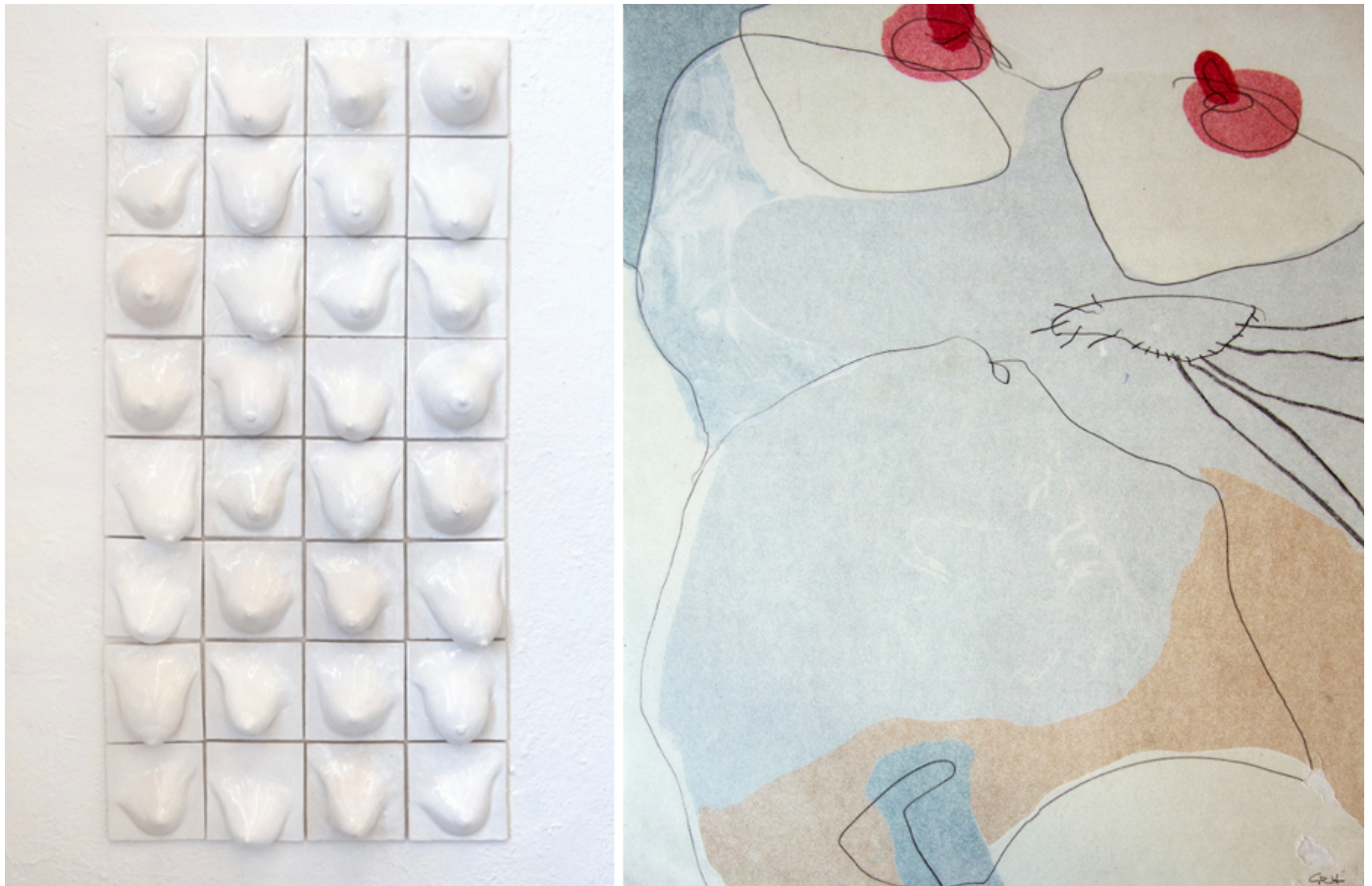


October 5, 2023 (Berlin, Germany) – **Artefact.Berlin** announces the first solo show by Brazilian, Berlin-based artist Caterina Renaux Hering, following her recent graduation at Universität der Künste (UDK) in Berlin. ***Blushing out of Blue***, will be on view from November 3, 2023 – December 20, 2023, unveiling 11 pieces, ranging from dainty drawings to ceramic sculptures, expressing the artist's sensibility towards crafting a distinctive language with shapes, senses, and exploration of materiality.

Blushing out of Blue will debut a series of new drawings and site-specific ceramic pieces, engulfing the gallery into the very essence of Renaux Hering's subject, genuine sensation. The diverse expression from a range of mediums allows the artist to craft narratives, diving deeper into the sensuality of the subject, ultimately becoming mystifying surfaces for generating sentiments. Working within the existing materiality of the exhibition space itself, the works become embedded in its structure, further coding its sensual essence into the gallery.

At the heart of Renaux Hering's artistry lies an exploration of the human body as the central subject and vehicle for her creative expression, drawing on the themes of transience, eroticism, delight and duration. Probing various facets of sensibility through her unique perspective, Renaux Hering's work invites viewers to make sense of the genuine sensations that pulse through corporeal existence. Drawing, as a consistent presence in her oeuvre, allows Renaux Hering to look for the soul's knowledge of our intrinsically unfolding self. Serving as her very own *Ariadne's thread*, the lines act as guides for navigating the labyrinth of subjectivity, packing depths into shapes and emerging from abstraction towards clarity.

Blushing out of Blue unveils a variety of the artist's drawings, based on different plastic approaches encompassing both tradition and innovation. Spanning from the conventional method of drawing on paper, glass, and framing, the pieces include the use of resin as an ode to 1960s Italian aesthetics, and conclude with several drawings utilizing silicone, an innovative technique developed by the artist herself. The drawings fuse with silicone becoming one, liberating them into a skin-like fluid condition, achieving the resilience required for fragility to thrive. Netting the essence of the exhibition, in *'LinDonna'* (pictured above left), a drawing cast in silicone, the artist captures the beauty of femininity as the nurturer of the continuity of life and, as the very form that existence crafts to seduce the production of life continuously.



In the same vein as her drawings, the ceramic sculptures (pictured above) indulge in the inquiry into the origins of organic shapes, the site-specific pieces evoke the sensuality and sturdy delicacy of the human form, skillfully giving shape to archetypal representations of intimacy.

'Blushing out of Blue is a take on exciting vitality through the erotics of seduction and the language of elegance. To blush is an uncritical and innocent form of response, and the works presented are meant to be delicate excitors, pulling us away from stagnation as if by surprise,' the artist explains.

**MEDIA CONTACT:****A R T Communication + Brand Consultancy (Berlin)**Anna Rosa Thomae | CEO & Founder | art@annarosathomae.comHana Kohout | Account Manager | hana@annarosathomae.com**NOTES TO EDITORS:**

Blushing out of Blue is on view at Artefact.Berlin from November 3, 2023 – December 20, 2023.

Artefact.Berlin | Geisbergstraße 12, 10777 Berlin, Germany

Monday – Friday

10 – 6 PM and by appointment

About Caterina Renaux Hering

Caterina was born in 1985, in the south of Brazil and currently lives in Berlin where she recently finished her master degree in Fine Arts at Universität der Künste - UDK, under the mentorship of Professor Valérie Favre.

Caterina Renaux Hering creates artworks that span a diverse range of media, all driven by the intent to lend forms for the mystifying subjective substances that animate emotions. She engages with drawings, ceramic sculptures, assemblages, music, costumes, and performance as vehicles for crafting a language that resonates with the most delicate and dense aspects of sensibility. Her work places the body at the center of these investigations, exploring themes such as transience, eroticism, delight and duration, in a quest to make sense out of genuine sensation.

caterinarenauxhering.com | @caterinarenauxhering

About Artefact.Berlin Gallery

Established in December 2021, Artefact.Berlin is a gallery and project space prefiguring itself as an extension and complement to Thomae's already reputed international cultural communications agency A R T Communication + Brand Consultancy, founded in 2014. Through a series of curated exhibitions, the project is rooted in Thomae's ongoing commitment to promoting the interrelatedness between art, design and architecture. With a rich program of carefully selected exhibitions focusing on contemporary art and design, the space stands as an important reference point for art and design collectors and enthusiasts worldwide.

Rooted in the Schöneberg district's distinct architectural heritage, Artefact.Berlin will continuously connect with local art and design professionals and general audiences alike through a dense program of multidisciplinary events, talks, and performances, once again fostering Berlin's extensive and widely diverse cultural community and its visibility worldwide.

artefactgalleryberlin.com | @artefactgallery.berlin

About Anna Rosa Thomae:

Growing up in Berlin in the 1990s, Anna Rosa Thomae spent her formative years living and working between New York, London, and Berlin. With a career of over fifteen years in the field of global cultural communications Thomae has ceaselessly nurtured the premise that valuable synergies exist between, and can emerge from, art, design and architecture – a vision that led her to establish her own consultancy, A R T in 2014 in Berlin. Ever since, Thomae has worked with creatives across all continents, ranging from gallerists, museums, and artists to designers, architects, and more.

A versed art and design collector, constantly shaped by her professional and personal encounters, Thomae has developed an extensive collection bringing together vintage European furniture from the 1960s–1980s in tandem with Modern, Post-War and Contemporary Art. Established in 2021, Artefact.Berlin is the symbiosis between these two passions that continue to develop to this day.



Image Caption

1. Left. 'LinDonna', drawing cast in silicone, 120 x 80 cm. Courtesy of the artist. Right. 'Fave Hands Touching The Absent'. Graphite On Paper. 420x997mm. Courtesy of the artist

2. Left 'Archetits'. Ceramic. 145x145 mm. Courtesy of the artist. Right. 'CherryDonna'. 60x50cm. Courtesy of the artist